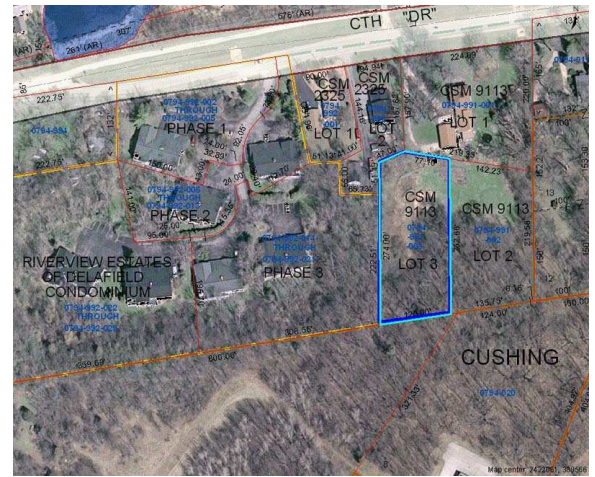


CITY OF DELAFIELD ~ DUPLEX LOTS



LOT 2
CSM 9113
MLS# 1103683



LOT 3
CSM 9113
MLS# 1103703

NEW PRICE ONLY \$79,000 per lot!

Great investment opportunity to build two-family units in Delafield. Approximately 3/4 acre lots zoned R-2 are partially wooded for privacy. Convenient location near I-94, downtown Delafield, & park yet secluded and tucked back off the road. Seller to install rough cut road within ingress/egress easement and extend sewer lateral to lots. Located on MAIN ST (aka DR)

Utilities		Tax Information	
Telephone/ Cable	Available	Tax Info Lot 2	DELC0794991002 \$1,426.66 / 2010
Electric/Gas	Available	Tax Info Lot 3	DELC0794991003 \$1,410.78 / 2010
Water	Well Required	Acreage	Lot 2 = .776 Acres Lot 3 = .755 Acres
Waste	Sewer lateral to be extended to lots	Zoned	R-2 (Duplex)
School District	Kettle Moraine / Dousman Middle / Cushing Elementary		
Pin # / MLS#	PIN# 202 MLS# 1103683 / 1103703		
Listing Agent	Bill Minett		

Directions: I-94, exit Hwy. C north to Main St., west past Cushing Park Rd. to property on south side of street.

Website : www.billminett.com

426 E. Wisconsin Avenue
 Oconomowoc, WI 53066

Toll free: 1-877-367-6480

